

Strathcona County

Living

Keeping you informed

May 2008

By each making a small change, together we can make a big difference

These days, more people seem to be thinking about their effect on the environment.

Whether it's using less pesticide in the garden, taking along reusable bags to the grocery store, or taking care to dispose of hazardous materials in the proper way—many of us are taking action.

In the next month, our community is taking a major step with the introduction of the County's new waste collection service.

If you receive weekly collection service from the County, you will be able to put materials out each week for recycling—for example, paper and cardboard; glass, metal and plastic containers; even Styrofoam. (The County's recycling stations will continue to be open.)

By now, or very soon, you will receive two carts to use with your weekly collection. One is to collect organics—for example, kitchen scraps and grass clippings. These materials will be sent for composting. The second cart is for waste, the materials that cannot be recycled or composted.

Along with the carts, you'll receive a booklet explaining the new services.

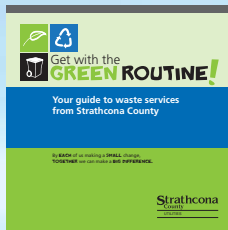
Not only is this new system good for the environment—it makes sound economic sense. After December of this year, waste collected by Strathcona County can no longer be taken to the Clover Bar Landfill. Residential waste collected by the County will have to be transported to a facility further away—and we're all seeing what is happening with fuel prices.



Get with the **GREEN ROUTINE!**

To help everyone make a smooth transition to the new services, check for information.

- a booklet delivered with your carts



- your new Collection Schedule showing your fixed day

S	M	T	W	T	F	S
1	2	3	4	5	6	7
8	9	10	11	12	13	14
15	16	17	18	19	20	21
22	23	24	25	26	27	28
29	30					

- the County's Street Team at community events in May and June
- by phone, or on the web

Black cart for waste

Green cart for organics



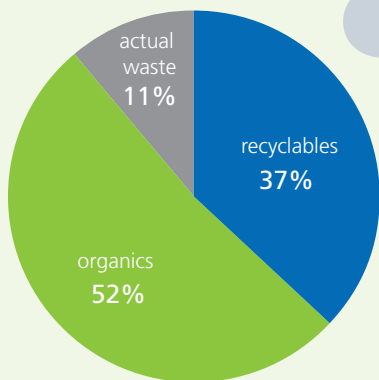
Green catcher—
for collecting organics in
your kitchen.

Compostable bag
(optional)

June 16, 2008—that's when the new services begin

Did you know?

Only 11 per cent of our waste needs to go to landfill. The rest can be recycled or composted.



Strathcona County's current waste stream

GREEN LINE 780-449-5514

www.strathcona.ab.ca/utilities

E-mail: greenroutine@strathcona.ab.ca

FIRE OPS 101 – first-hand experience with emergency response



Strathcona County Council and members of administration recently took part in a one-day session giving them an insight into situations that emergency responders face daily. The session took place at Lakeland College's Fire Emergency Training Centre at Vermilion, and was made possible by County fire fighters who volunteered their time and expertise.

Strathcona County
2001 Sherwood Drive,
Sherwood Park, Alberta
780-464-8111
www.strathcona.ab.ca
info@strathcona.ab.ca

printed on recycled paper

Strathcona
County

Community Centre: a heart for our community

Our new Community Centre

creating a heart for our community

Centre in the Park
Strathcona County

celebrate, gather, enjoy

the **Agora**
a community meeting place for celebrations, events, conferences



the **Community Centre**... A truly welcoming place for everyone!

be enriched, appreciate, connect

the **Artrium** – one of the areas where art is displayed and celebrated



engage in local government, conduct community business

Council Chambers
a space for governance, presentations and community meetings



read, learn, discover

the **Library** – a 'living room' for the community



exhibit, express, showcase

Art display space
an area dedicated to art features and displays



(subject to securing grant funding)

be welcomed, mix, circulate

the **Galleria**
an inviting interior street linking the entire centre



The Community Centre...

- culture, learning and services
- flexible indoor and outdoor spaces
- showcase for history and our natural environment
- model of sustainable development
- builds upon our identity
- a hub within Centre in the Park—a multi-use area of residences, restaurants, shops, municipal services and inviting public spaces

A place for... you, your family, your neighbours, visitors

Volunteer Plaza

a tribute to our community's volunteer spirit



Architectural renderings are not final. Design changes may occur.

Coming 2010



Today, there's a massive excavation and a crane adjacent to County Hall in Sherwood Park—but soon, everyone will see Strathcona County's Community Centre start to take shape in the Centre in the Park.

The components of the Community Centre are designed to serve the residents of our municipality while also reflecting the distinct identity of our community's urban and rural character.

When it's finished in 2010, the Community Centre will provide space for public events and gatherings, areas where art is displayed, rooms for community groups to meet, a new Council Chambers and fully accessible offices for Family and Community Services.

The largest area in the Community Centre will be the new Strathcona County Library on two levels, or as it has been called, the living room of the community.

Third floor for future growth

A third floor is being constructed on part of the building over the Family and Community Services offices to provide additional space to address future growth. This third floor will be finished on the exterior, with interior finishing left until the space is occupied. Any area not immediately needed by Strathcona County may be leased to business or other organizations until it is needed for municipal purposes.

The Community Centre is part of Centre in the Park. While the entire area is pedestrian



Community Centre construction as of May 14, 2008

friendly, 400 underground stalls are being constructed to ensure there is ample parking.

The Centre in the Park area has long been set aside for a multi-use development that connects to Festival Place, Broadmoor Lake Park, existing businesses and schools, and enhances the nearby residential and retail amenities.

Environmental stewardship

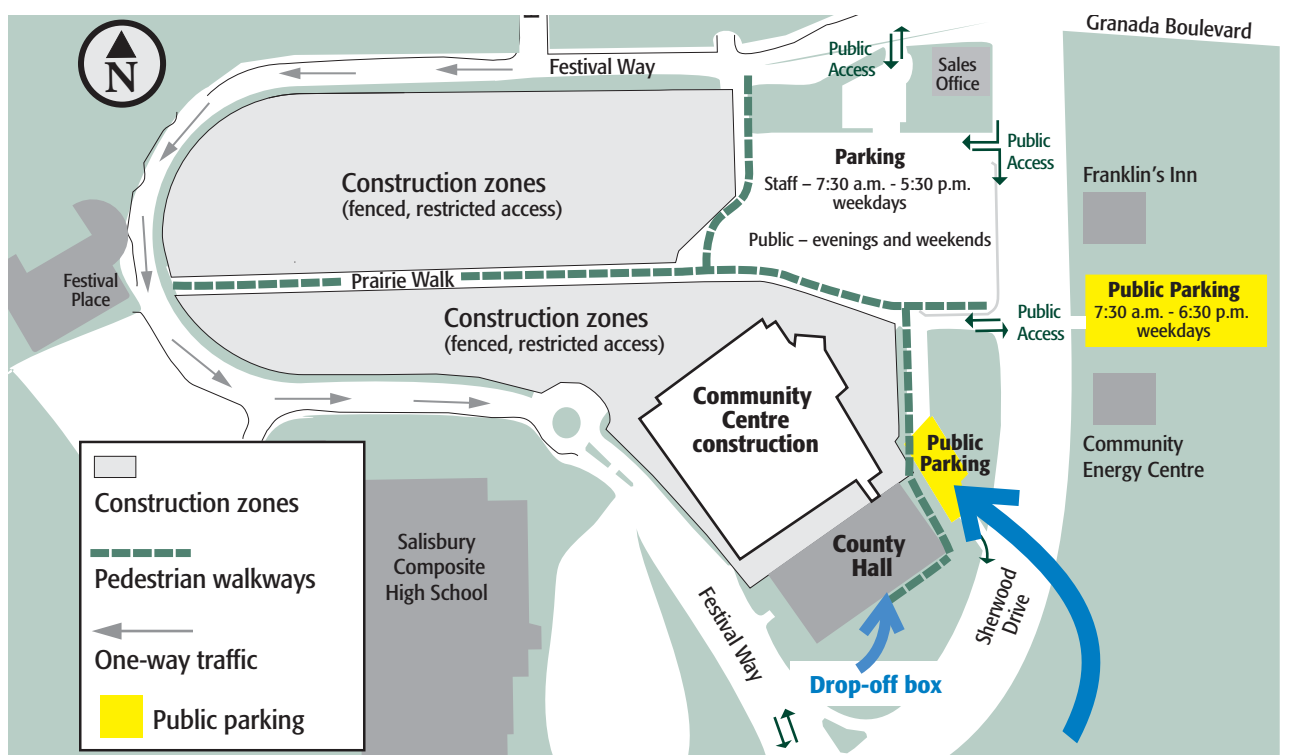
Like all of Centre in the Park, the Community Centre will be a model of environmental innovation. Building design, technology and materials will be chosen for greatest operating efficiency, cost effectiveness and benefit to the environment.

The building is being designed to meet the LEED Gold standard. LEED or Leadership in Energy and Environmental Design is an internationally recognized rating of the environmental impact of buildings.

Several environmental wins have already been achieved in Centre in the Park.

- The Community Energy System delivers hot water through insulated underground pipes to heat County Hall, Festival Place, the Kinsmen Leisure Centre pool, the arena, and the new residential buildings in Centre in the Park. The Community Energy System reduces greenhouse gases by 1,100 tonnes per year compared with a conventional system.
- When the former Family and Community Services building was demolished, 78 per cent of all materials were reclaimed for use in other construction projects.
- Light standards from the former Heritage Mall in Edmonton are being reused in the County Hall parking lot that relocated outside the construction zone.

Temporary parking facilities during construction of the Community Centre



In June, 15-minute parking only—during tax payment time.



What you get for your tax dollar

One of the County's major responsibilities is deciding how to use its resources to deliver the services our community needs and wants.

Here is just a sample of some of the services the County provides (2007 figures unless otherwise stated)

- Response to 4,653 emergency calls—fire, ambulance, rescue, dangerous goods
- Five emergency response stations—two in Sherwood Park, and three in rural areas, Heartland Hall, South Cooking Lake and Ardrossan
- RCMP and Enforcement Services, including bike patrols, and off-highway vehicle enforcement
- Maintenance of 1,299 km of rural roads, and 359 km in Sherwood Park
- Rides for 2,019,122 passengers on Strathcona Transit and 12,870 passengers on SCAT, the accessible transit service
- 5,100 hours of counselling for 900 families (2006)
- 10 major recreation facilities including the pool, arenas, Millennium Place and the Strathcona Wilderness Centre
- Maintenance of 212 sports fields and ball diamonds
- 85 km of Heritage Parkway Trails
- 870 hectares of parkland—parks, school sites, playing fields, trail systems and landscaped boulevards
- Five recycling stations, open 24 hours a day, seven days a week (Water, sewer and waste collection are paid entirely from user fees.)
- Family day homes serving 96 children per month
- Processing of 1,288 permits for new residential units
- Processing of 139 subdivision and rezoning applications, 2,308 development permits

Seniors' Property Tax Rebate



Strathcona County Council has approved a property tax rebate to assist seniors who qualify for the Alberta

Seniors' Benefit Program. Seniors who qualify will receive \$100 per household. To qualify for the rebate, by May 1, 2008, a senior must:

- be 65 years of age or older and
- live in Strathcona County and
- own a residential property in Strathcona County and
- be eligible for the Alberta Seniors' Benefit Program.

No application is required.

Seniors who qualify for the Strathcona County Seniors' Property Tax Rebate will receive cheques by the end of July in the amount of \$100 per qualified household. These cheques will be issued on behalf of Strathcona County by the Government of Alberta through Alberta Seniors and Community Supports. If you feel you are eligible for the rebate and have not received a cheque by the end of 2008, please call 780-427-7876.

Further information

The Strathcona County Property Tax Rebate Program
780-464-8196

Committed to doing our part for the environment

As the County's Strategic Plan directs, we are consciously moving toward creating a sustainable community.

As part of that, development of an Environmental Sustainability Framework is underway.

This framework, together with the Social Sustainability Framework approved in 2007, and the Economic Sustainability Framework (to be developed) will form an important foundation to guide decision making in Strathcona County. The three will achieve the triple bottom line approach, which encourages a balance of environmental, economic and social elements to sustain a healthy and vibrant community.

Strathcona County's Municipal Development Plan defines sustainability as...

Developing in a manner that meets the needs of the present without compromising the ability of future generations to meet their own needs, while striking a balance between economic prosperity, social responsibility and environmental stewardship.

What does the Environmental Sustainability Framework intend to accomplish?

- prioritize and plan for future environmental initiatives
- guide new policies and procedures to ensure a broad range of environmental factors and impacts are considered in planning and decision making
- assess the effect of changes in the environment on residents and operations
- be a tool to respond to environmental issues
- keep current with relevant studies, indicators and trends

- clarify roles of orders of government, staff, residents
- keep informed and actively participate in new funding opportunities
- ensure we are a leader in new, innovative and efficient technology
- assist in engaging residents, businesses, community groups in becoming more environmentally aware and motivated
- strengthen the County's commitment to integrated planning (environmental, social, economic)

Project phases

Phase 1—January through March 2008

Research on the State of the Environment

Extensive research has been occurring to capture the current landscape relating to the biophysical attributes within Strathcona County, and our environmental practices within County operations. Review and compiling of environmental baseline data, development of key environmental indicators and green mapping has been the primary work of this phase.

Phase 2—April through June 2008

Stakeholder Engagement

Opportunities are being provided for industry, agricultural, business and community organizations, and residents in Strathcona County to provide their views and input on the development of the framework.

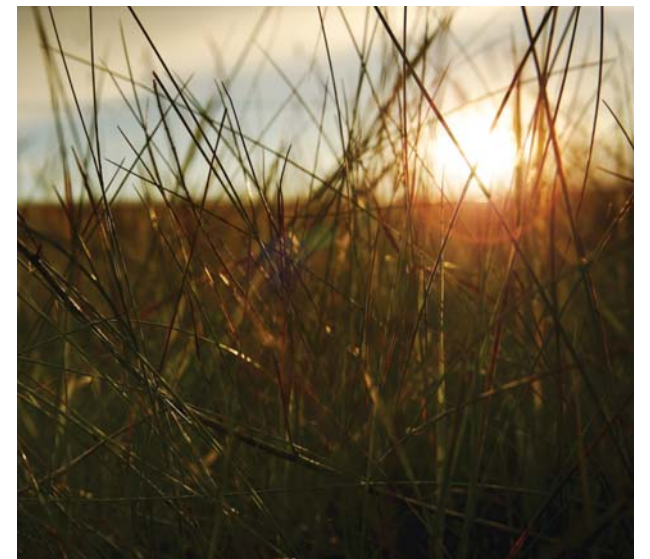
Phase 3—Final review October 2008

Development of the Framework

Information gathered during the first two phases will be used to complete the framework.

Further information

www.strathcona.ab.ca
info@strathcona.ab.ca



A green County

Environmental stewardship has long been key in Strathcona County. Numerous environmental programs and initiatives have proven successful. Here are some firsthand examples of our progress toward greater environmental sustainability.

- Backyard Composting
- Beaver Hills Initiative
- Built Green Rebate Program
- Centre in the Park—Community Centre
- Centre in the Park Development
- Community Energy
- Conservation Easements
- Ecoscaping Contest
- Emerald Hills Development
- Fleet Services (Hybrid/Solar)
- Good Growing Neighbours
- Greening of Sherwood Park
- Hazardous Waste Roundup
- Low-Flow Toilets Rebate Program
- Mow and Go
- Recycling and Disposal Options
- Think Trees / 2008 Urban Forest Conference
- Water Calculator
- Water Conservation

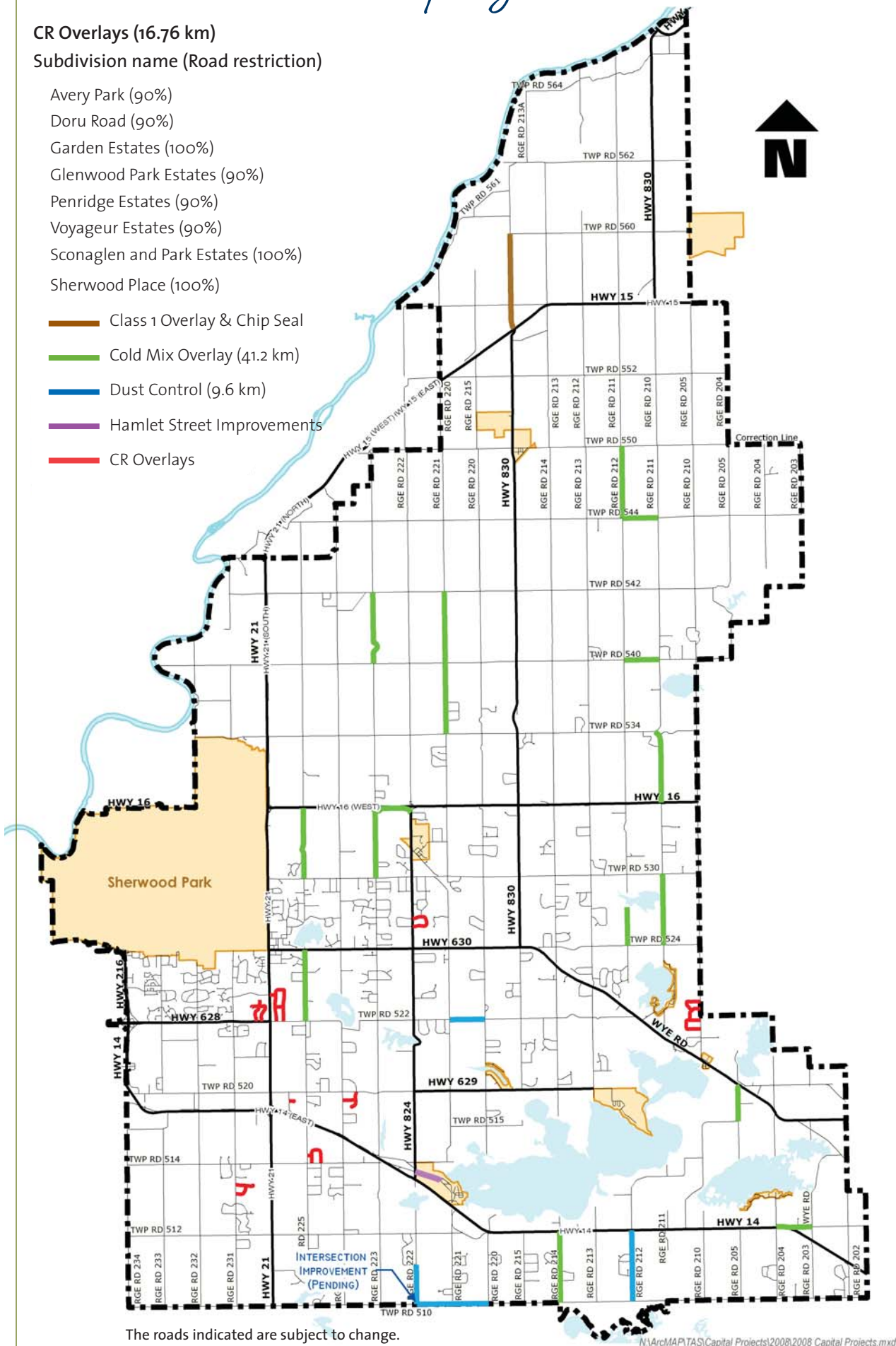
2008 Rural Road program

CR Overlays (16.76 km)

Subdivision name (Road restriction)

- Avery Park (90%)
- Doru Road (90%)
- Garden Estates (100%)
- Glenwood Park Estates (90%)
- Penridge Estates (90%)
- Voyageur Estates (90%)
- Sconaglen and Park Estates (100%)
- Sherwood Place (100%)

- Class 1 Overlay & Chip Seal
- Cold Mix Overlay (41.2 km)
- Dust Control (9.6 km)
- Hamlet Street Improvements
- CR Overlays



The 2008 Rural Road Program is established as part of the Rural Roads Master Plan (RRMP), which outlines a strategy to uphold a specific service level on our County's roads. Created in 1995, the RRMP is a hands-on working document used by Strathcona County's Transportation and Agriculture Services and Engineering and Environmental Planning departments to maintain and, over time, upgrade various components of the rural road

system. The RRMP is periodically reviewed to ensure it reflects the needs of the community. These projects include 16.9 km of Country Residential overlays, 41.2 km of new overlays on County grid roads, 9.6 km of dust control upgraded to coldmix, hamlet street improvements at South Cooking Lake and Class 1 overlay and chipseal on Range Road 214, north of Highway 15. Further information: 780-417-7100

Roadside cleanup program

Slow down for roadside cleanup crews

The Spring Roadside Cleanup Program is in progress across Strathcona County.

Watch out for the volunteers!

If you see the sign Roadside Cleanup Ahead, please slow down and drive with care! Further information: 780-417-7100

History corner

Gold and governance at Clover Bar

After joining the gold rush in California in 1849 and following it to British Columbia in 1858, Thomas H. Clover was lured further still by rumours that gold had been discovered on the North Saskatchewan River in the North-West Territories. In 1859, he set out east to cross the Rocky Mountains and arrived at Fort Edmonton the following spring. (Source: Berry, J.P., Clover Bar in the Making, 1881-1931)

Clover set up his "rocker" east of the fort. Located two and a half miles north of the old Clover Bar post office, it became known as Clover's Bar.

Soon "Clover Bar" was the name used for the whole district between the river and Beaver Hills, including an area declared Fire and Labor District Number Two on April 14, 1893 by the territorial government. This form of self government was needed to protect property from stray cattle and horses, and the threat of fire.

In April this year Strathcona County recognized the 115th anniversary of the declaration that made Clover Bar the first rural self-governing area in what is now Alberta.

Photo courtesy of Strathcona County Museum & Archives



Will Daly (left) stands with R.P. Ottewell in front of Daly's store at Clover Bar Village (date unknown)

The Strathcona County Heritage Legacy Project is tracing the community's history through stories and recollections. If you have a story of the County's history you'd like to share, we'd love to hear from you. Call Lori Clapp at 780-416-6762.

Heritage plan in the works

Work is underway to develop a Heritage Resources Management Plan that will help to conserve Strathcona's historic buildings, archaeological sites, and other significant resources. This plan will add to the work already underway by the Strathcona County Museum and Archives and others active in preserving our heritage. For more information on the plan, call 780-416-6762.

Contact information for Council

Cathy Olesen	Mayor	464-8000	olesen@strathcona.ab.ca
Vic Bidzinski	Councillor, Ward 1	464-8005	bidzinski@strathcona.ab.ca
Roxanne Carr	Councillor, Ward 2	464-8002	carr@strathcona.ab.ca
Linda Osinchuk	Councillor, Ward 3	464-8149	osinchuk@strathcona.ab.ca
Peter Wlodarczak	Councillor, Ward 4	464-8146	wlodarczak@strathcona.ab.ca
Jacque Fenske	Councillor, Ward 5	464-8147	fenske@strathcona.ab.ca
Alan Dunn	Councillor, Ward 6	464-8206	dunn@strathcona.ab.ca
Glen Lawrence	Councillor, Ward 7	464-8003	lawrencg@strathcona.ab.ca
Jason Gariepy	Councillor, Ward 8	464-8158	gariepy@strathcona.ab.ca